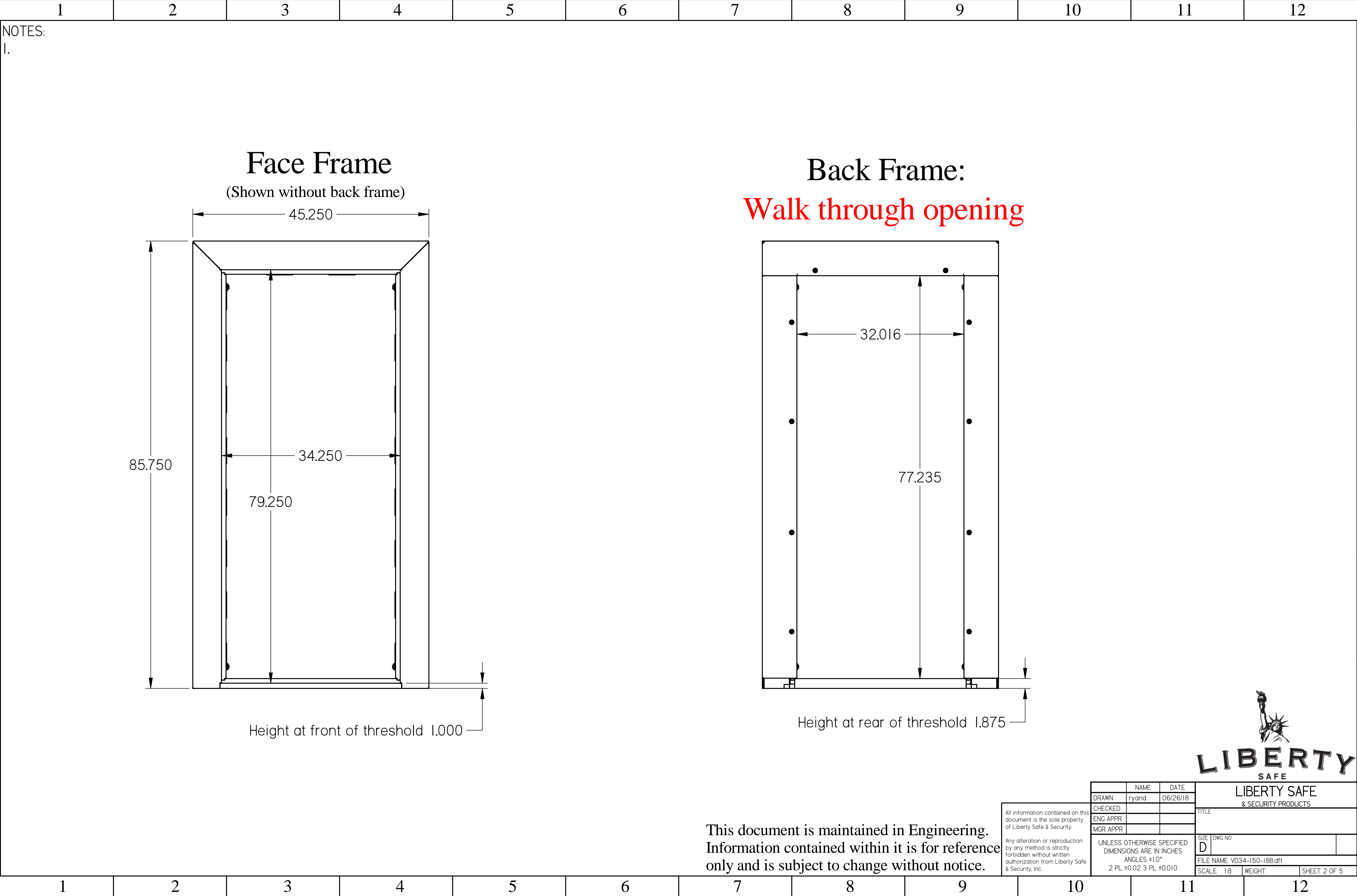


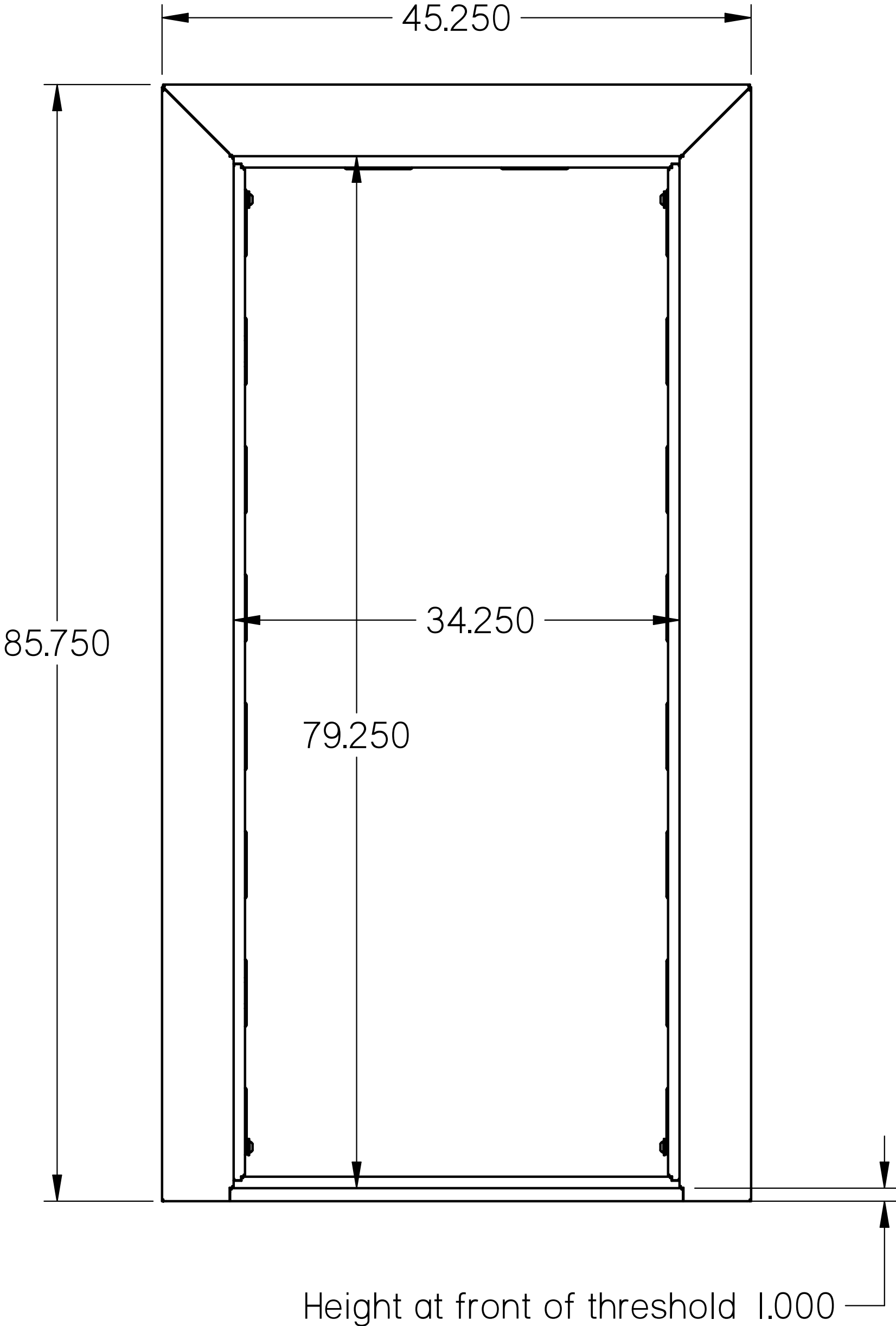
This document is maintained in Engineering.
Information contained within it is for reference
only and is subject to change without notice.



NOTES:
1.

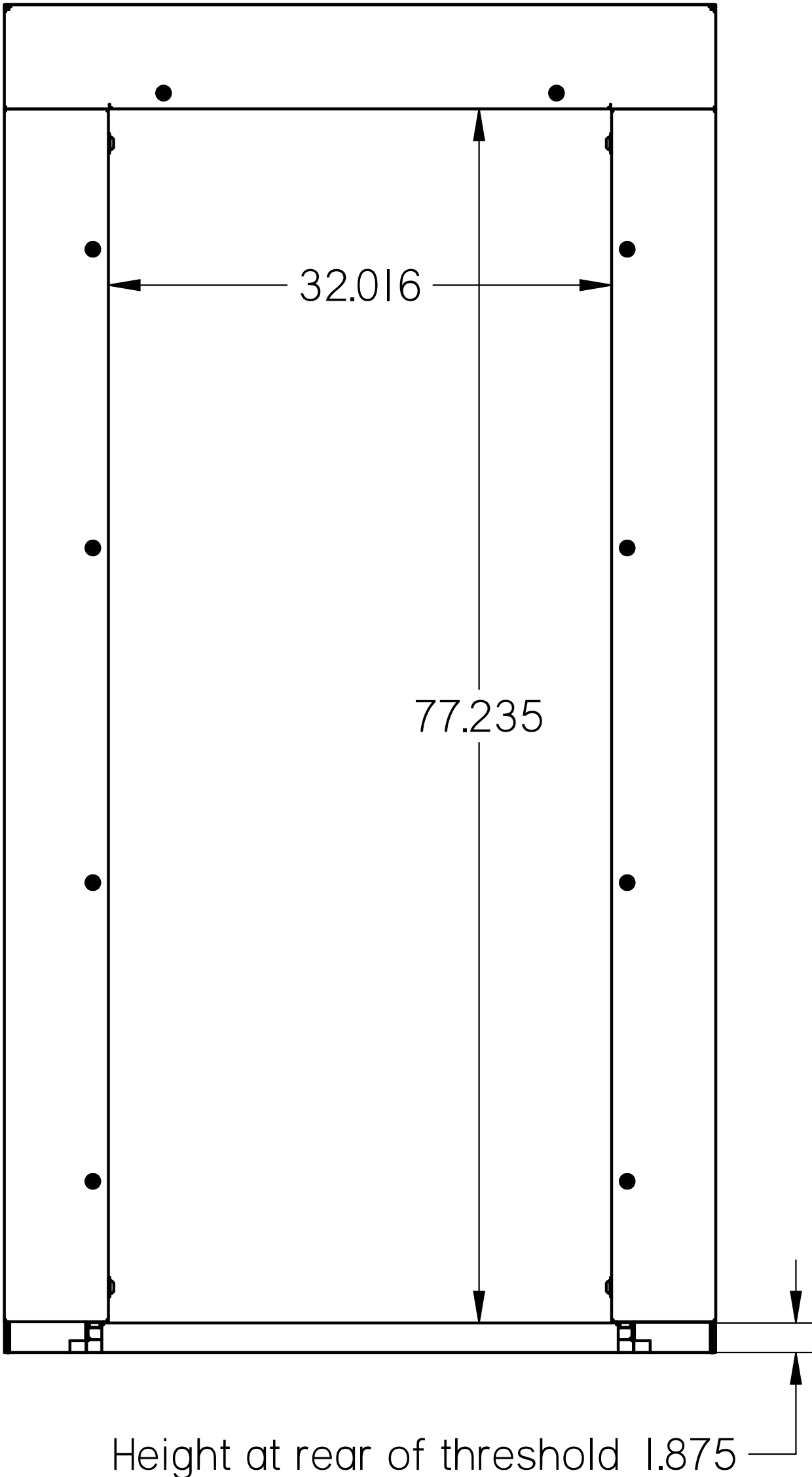
Face Frame

(Shown without back frame)



Back Frame:

Walk through opening



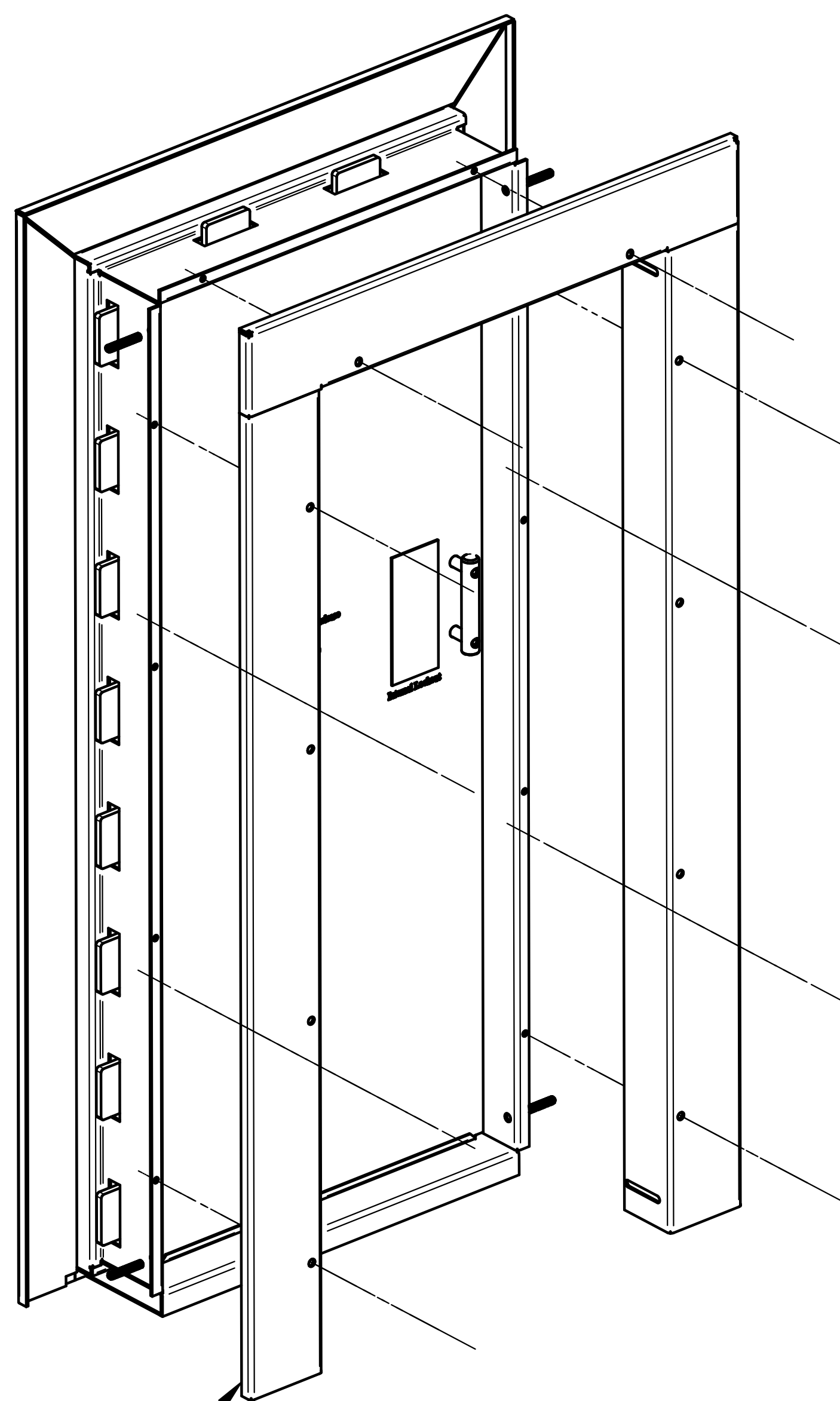
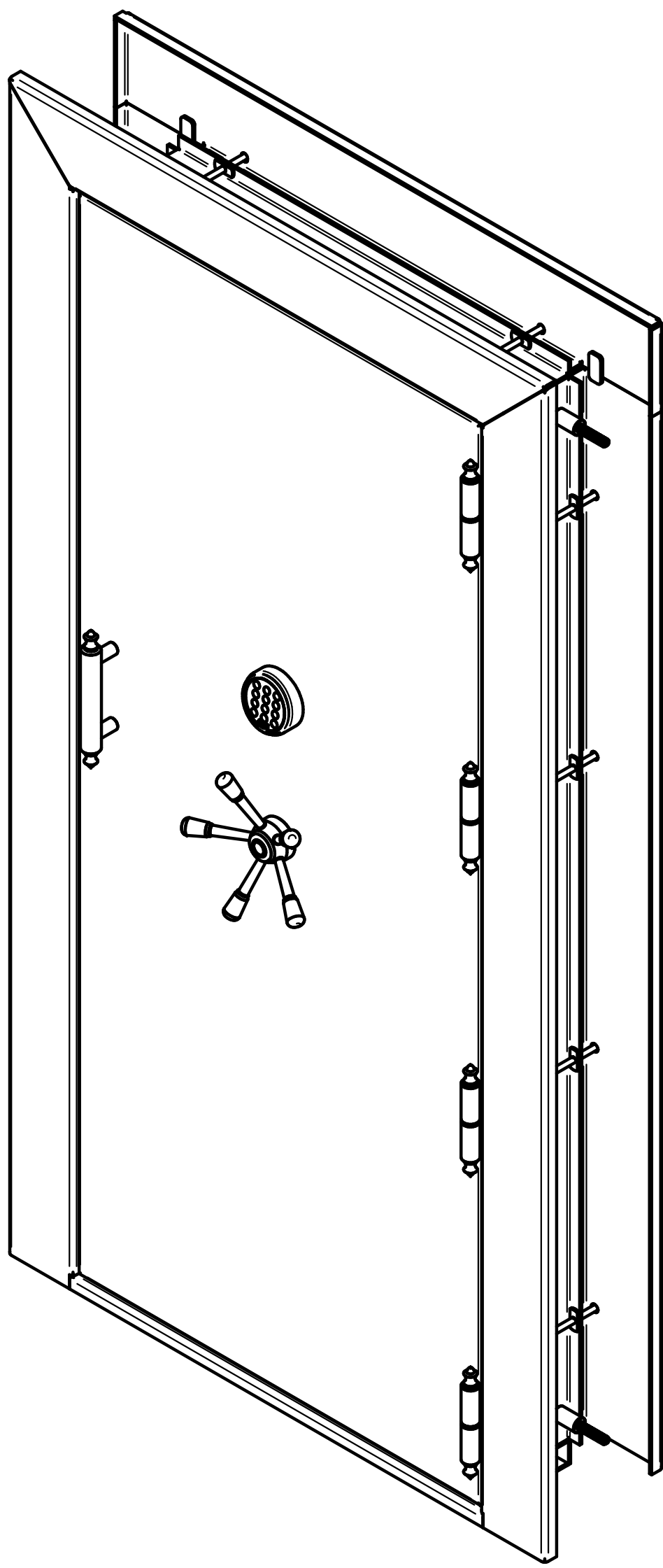
	NAME	DATE	LIBERTY SAFE & SECURITY PRODUCTS	
DRAWN	ryand	06/26/18		
CHECKED			TITLE	
ENG APPR				
MGR APPR				
UNLESS OTHERWISE SPECIFIED DIMENSIONS ARE IN INCHES ANGLES ±1.0° 2 PL ±0.02 3 PL ±0.010			SIZE	DWG NO
			D	
			FILE NAME: VD34-150-188.dft	
SCALE: 1:8		WEIGHT:	SHEET 2 OF 5	

This document is maintained in Engineering.
Information contained within it is for reference
only and is subject to change without notice.

All information contained on this
document is the sole property
of Liberty Safe & Security.

Any alteration or reproduction
by any method is strictly
forbidden without written
authorization from Liberty Safe
& Security, Inc.

NOTES:
1.



Clamshell Design -

This document is maintained in Engineering.
Information contained within it is for reference
only and is subject to change without notice.

All information contained on this document is the sole property of Liberty Safe & Security.

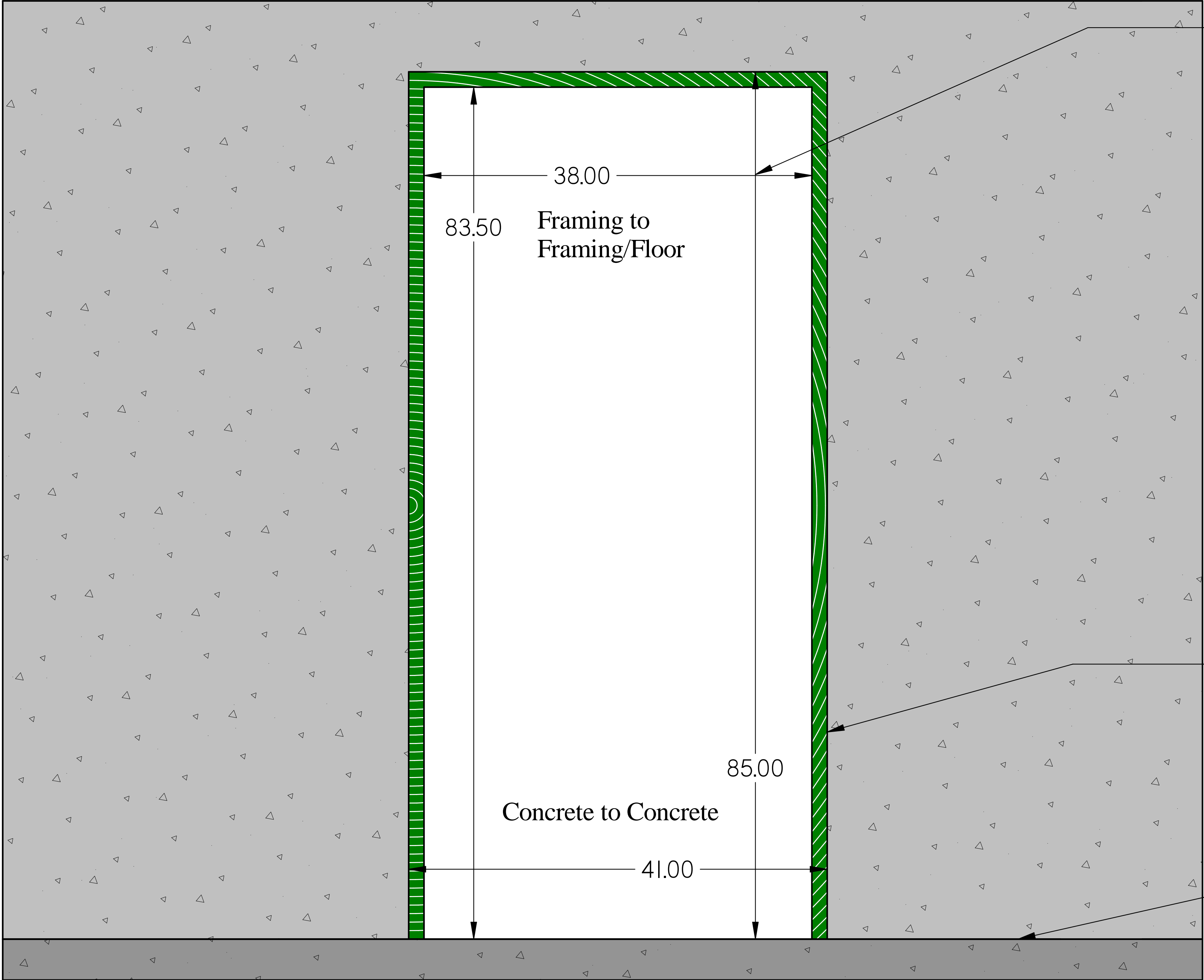
Any alteration or reproduction by any method is strictly forbidden without written authorization from Liberty Safe & Security, Inc.

	NAME	DATE	<div style="text-align: center;"> <h1>LIBERTY SAFE</h1> <h2>& SECURITY PRODUCTS</h2> </div>		
DRAWN	ryand	06/26/18			
CHECKED			TITLE		
ENG APPR					
MGR APPR					
UNLESS OTHERWISE SPECIFIED DIMENSIONS ARE IN INCHES ANGLES ±10° 2 PL ±0.02 3 PL ±0.010			SIZE	DWG NO	
			D		
			FILE NAME: VD34-150-18B.dft		
			SCALE: 1/2	WEIGHT:	SHEET 3 OF 5



NOTES:
1.

This shows a typical rough opening for a 36" wide x 80" tall door in a foundation wall



The vault door will accommodate any opening that is between 37"-42" wide and 81"-85" tall. These values may vary slightly based on the squareness of the opening.

Treated lumber is often secured to the concrete so that a door may be fastened to the opening.

Top of floor



All information contained on this document is the sole property of Liberty Safe & Security.		NAME	DATE	LIBERTY SAFE & SECURITY PRODUCTS	
Any alteration or reproduction by any method is strictly forbidden without written authorization from Liberty Safe & Security, Inc.		DRAWN	ryand		
		CHECKED		TITLE	
		ENG APPR			
		MGR APPR			
		UNLESS OTHERWISE SPECIFIED DIMENSIONS ARE IN INCHES ANGLES ±1.0° 2 PL ±0.02 3 PL ±0.010	SIZE D	DWG NO	
		FILE NAME: VD34-150-188.dft			
		SCALE: 1:6.67		WEIGHT:	SHEET 4 OF 5

This document is maintained in Engineering. Information contained within it is for reference only and is subject to change without notice.

